

# Incoming Call Processing

## Introduction

When a call is received by the jtel system, quite a lot of preparation is necessary before the call can be processed.

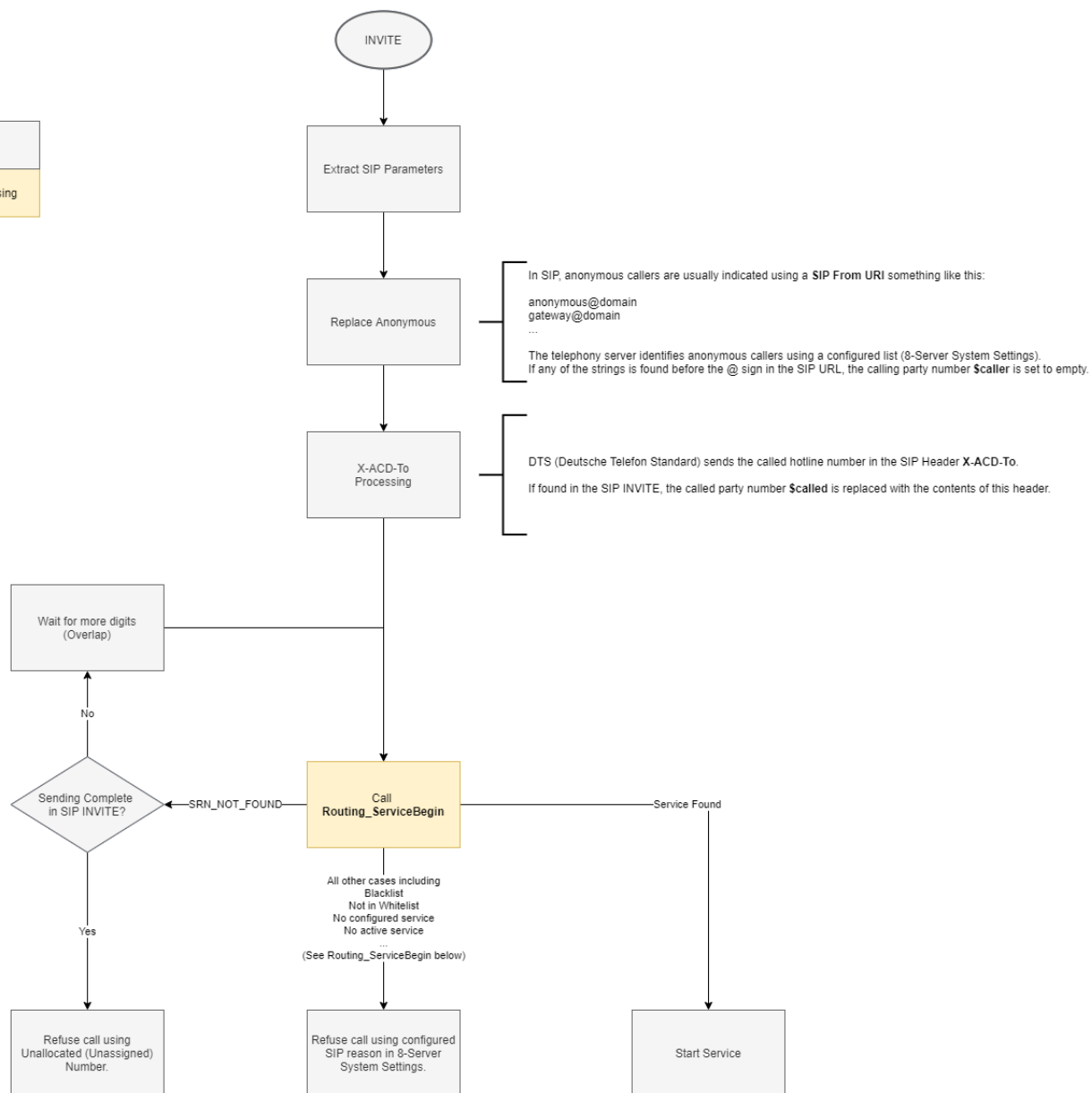
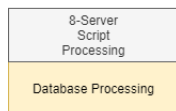
This section discusses what happens and how various selections are made, such as the trunk group associated with the call.

## Starting a Service

The main routine involved in processing incoming calls is **Routing\_ServiceBegin**, in tandem with the initial script **Portal.RoutingApplicationParser.r5**

The functionality is shown in the diagrams below.

### **Portal.RoutingApplicationParser.r5**



**Routing\_ServiceBegin**

