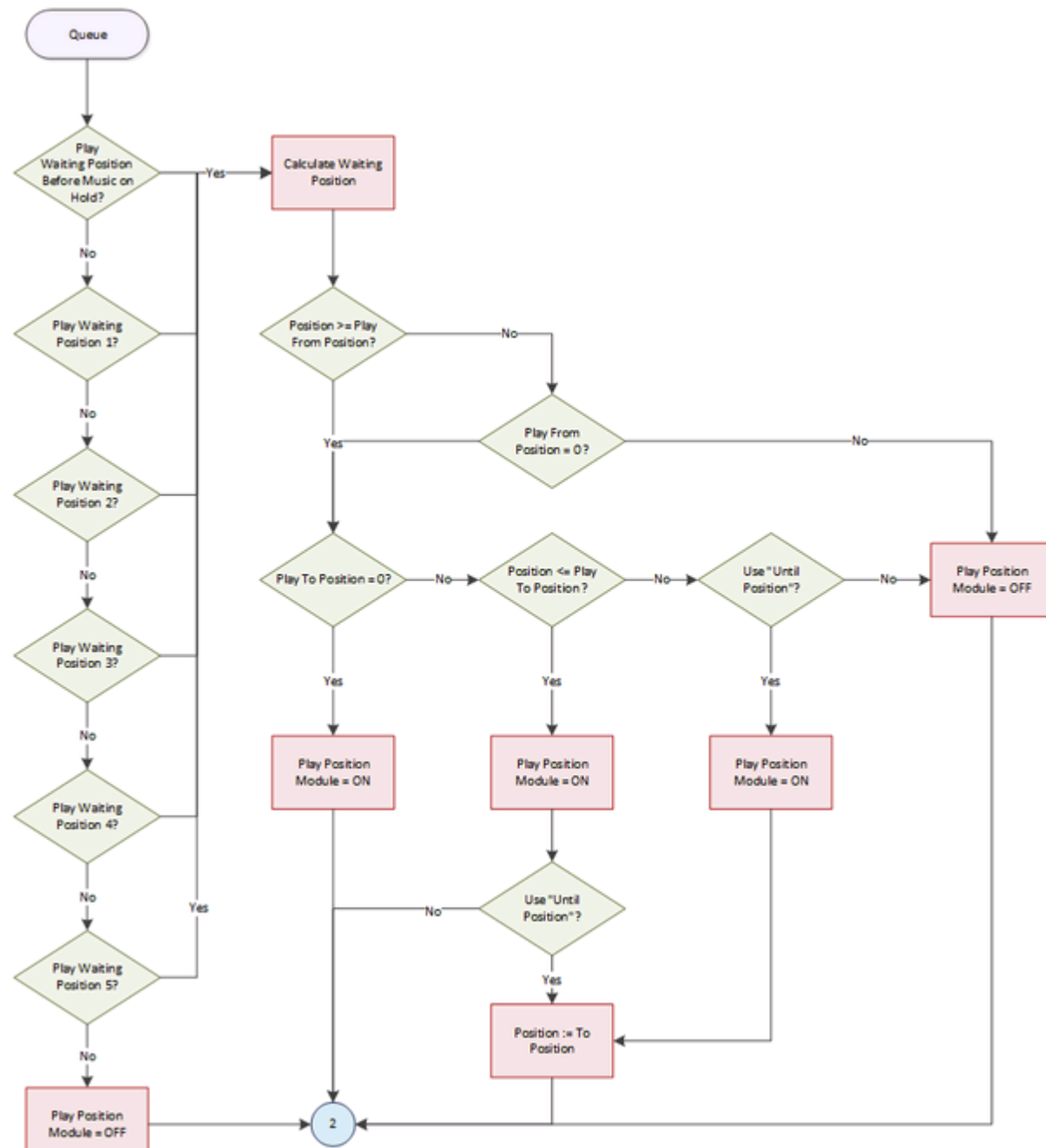


# The Queue

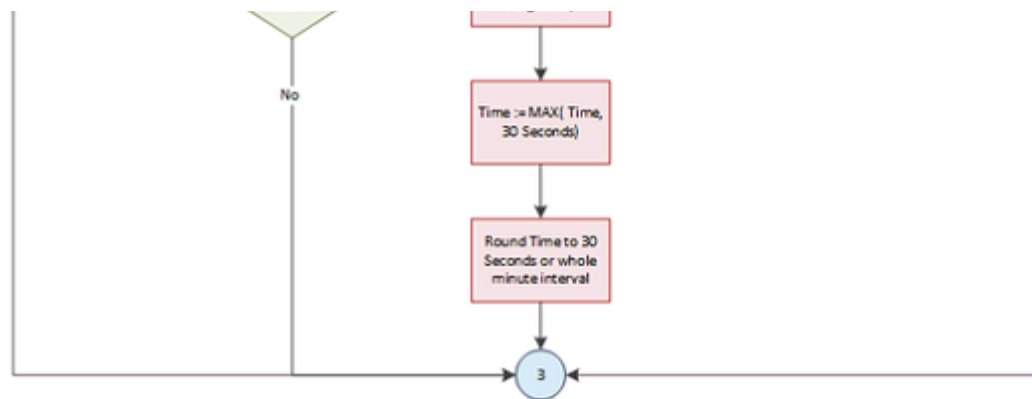
The queue is part of the call flow. In the explanation of the [Call Flow](#) you can see the queue module on the fourth flow chart.

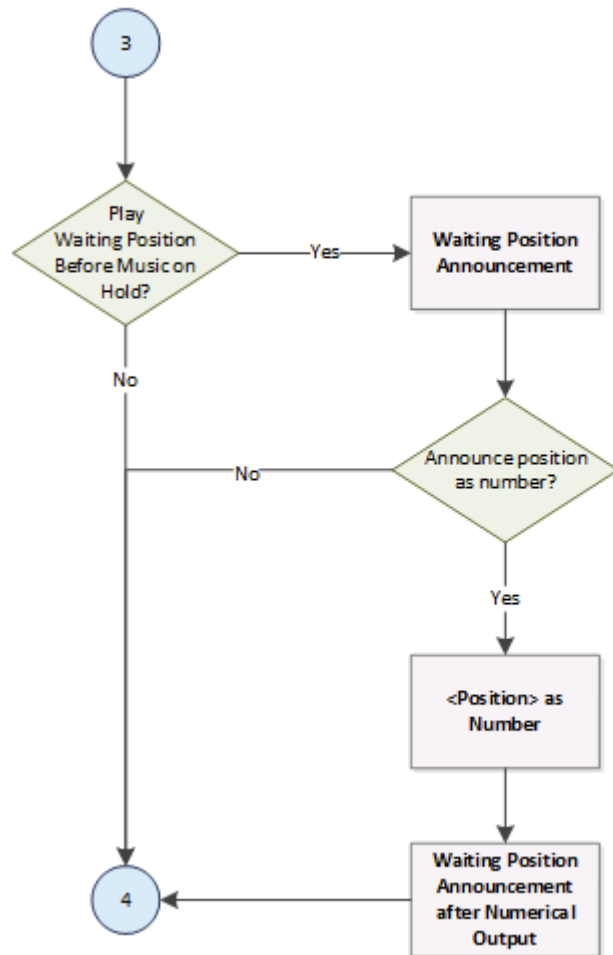
This module is explained here in more detail. The first 5 of the following diagrams can be considered as a unit. The blue circles numbered from 2 to 5 are the points at which the flow from the next and previous pages connect.

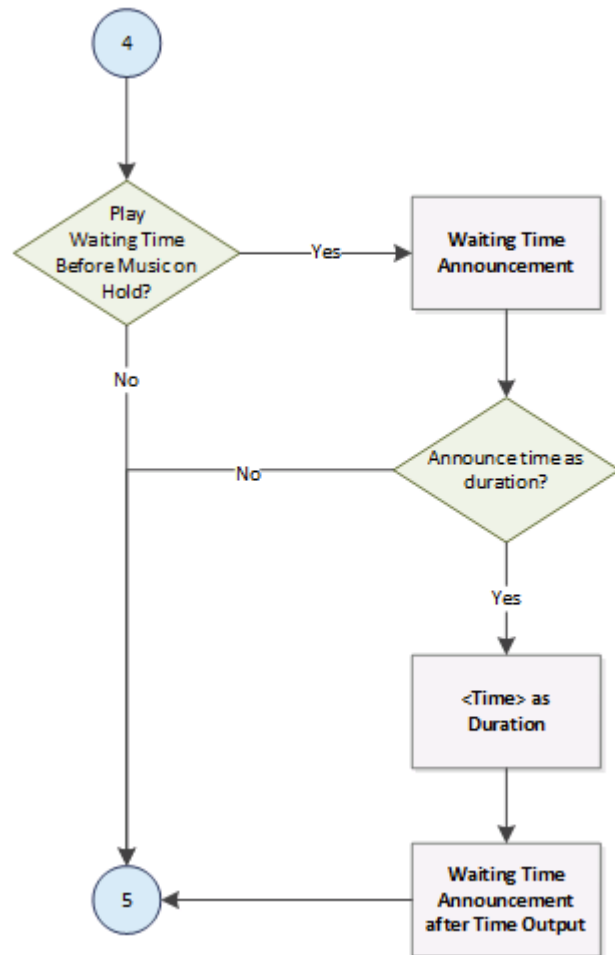


\_\_\_\_\_

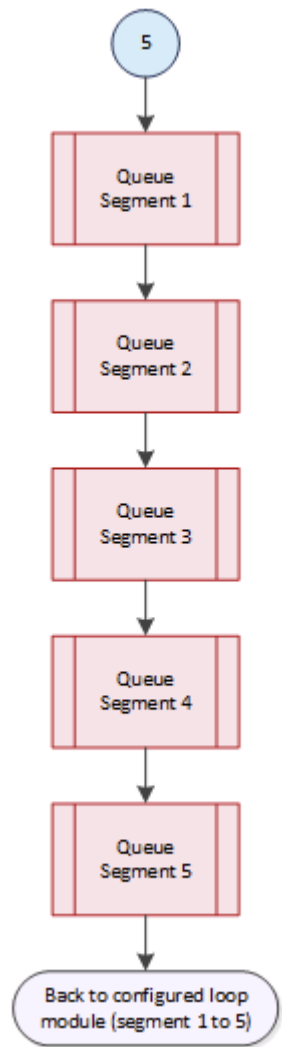








After the announcements for position and waiting time, the queue loop begins:



Each of the 5 segments is an instance of the following call flow. In this call flow, the waiting position and waiting time are recalculated and announced (in the same way as in the diagrams above).



