

CentOS 8 - Basic Installation as VM with .ISO Image (CentOS8/Win2019)

The following steps describe the basic installation process.

ISO File

The ISO File for the basic installation can be downloaded here: ARCHIVED https://cdn.jtel.de/downloads/ISOs/CentOS-8.1.1911-x86_64-boot.iso

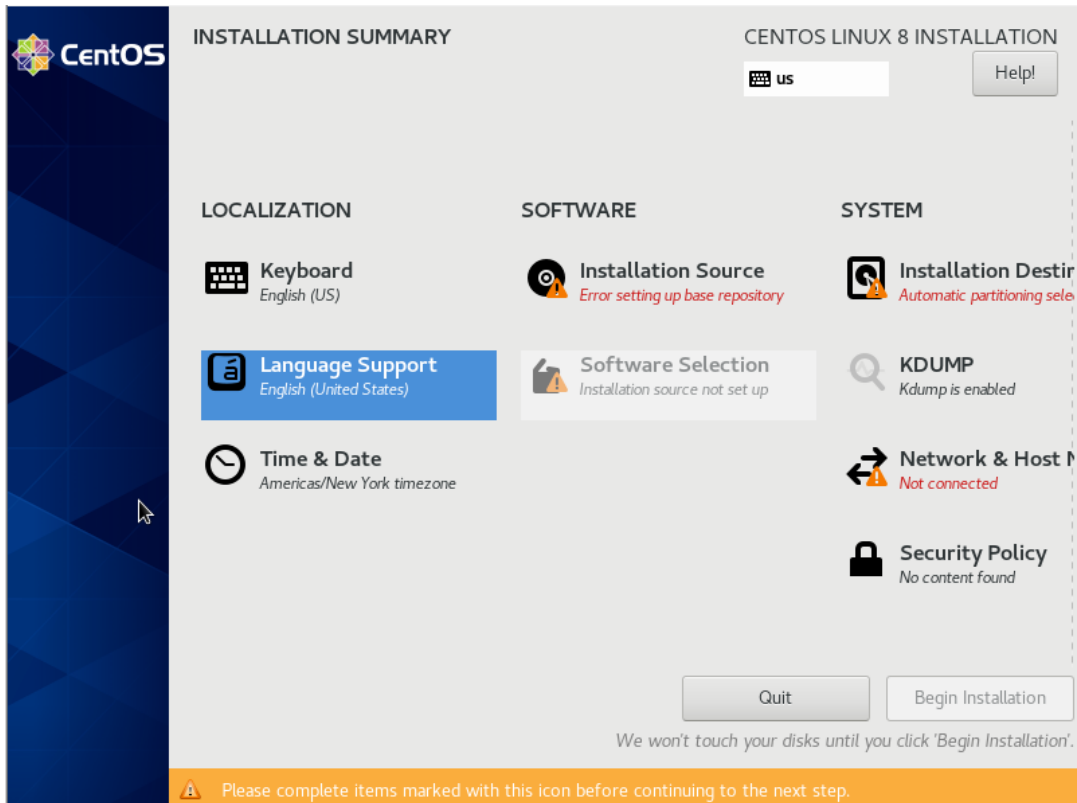
Select the first option (Install CentOS Linux 8).



On the next screen, select Continue.

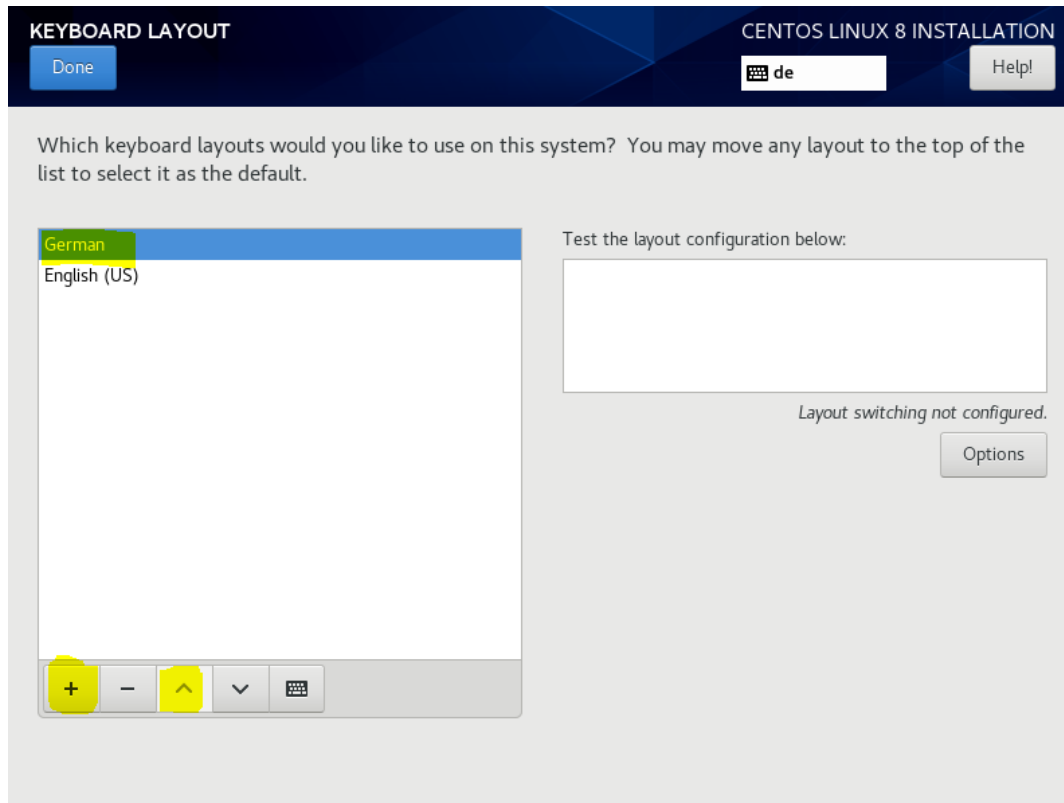


On the next screen, several items must be configured.



Setup the keyboard layout.

Include the most used keyboard layout first.



Setup the date and time. For example, to Europe / Berlin.

TIME & DATE

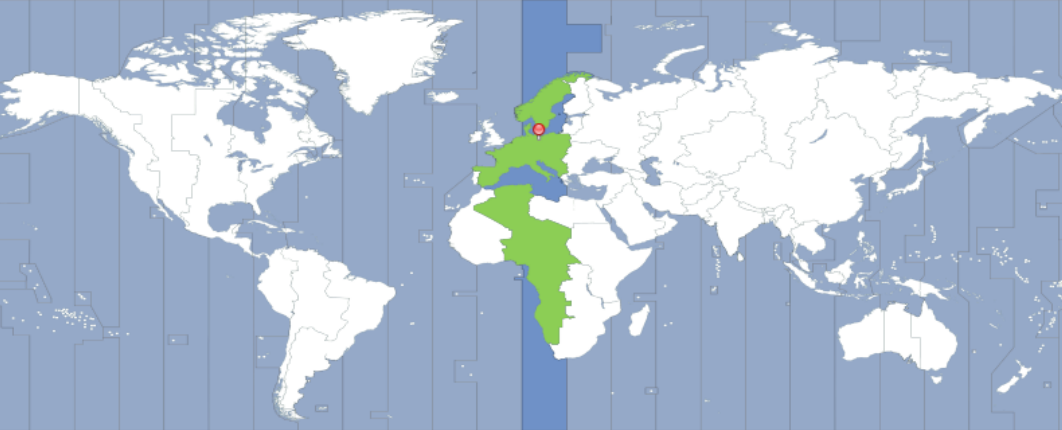
Done

CENTOS LINUX 8 INSTALLATION

de

Help!


Region: Europe City: Berlin Network Time OFF



21:22

☒ 24-hour
☐ AM/PM

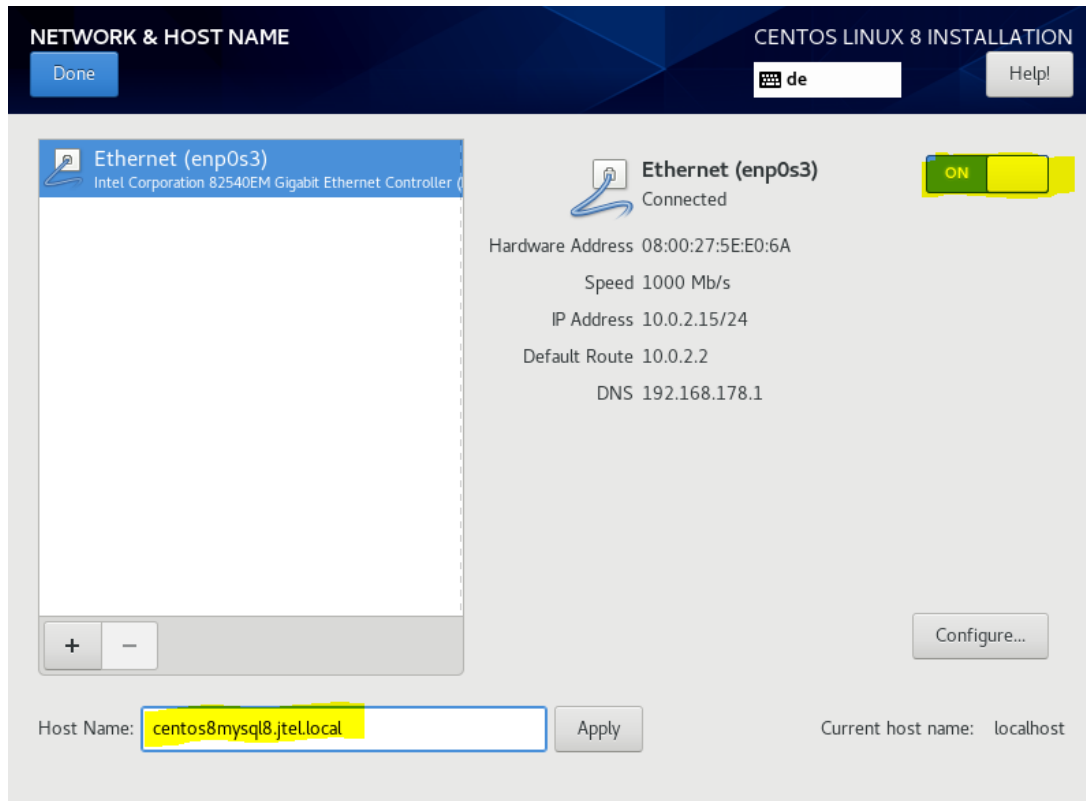
03 / 09 / 2020

 You need to set up networking first if you want to use NTP

Connect to the network and setup the hostname

This example shows a DHCP connection. You may need to configure this manually, if you are not using DHCP.

Note: if you are using DHCP, a **reservation** is recommended.



Once you have connected to the network, you could use **ping** from another machine to verify that the machine is in fact connected to the network.

Choose the Installation Destination

Usually, you will not need to configure anything special here.

INSTALLATION DESTINATION

CENTOS LINUX 8 INSTALLATION

Done

de


Help!

Device Selection

Select the device(s) you'd like to install to. They will be left untouched until you click on the main menu's "Begin Installation" button.

Local Standard Disks

32 GiB




ATA VBOX HARDDISK

sda / 32 GiB free

Disks left unselected here will not be touched.

Specialized & Network Disks



Add a disk...

Disks left unselected here will not be touched.

Storage Configuration

☒ Automatic ☐ Custom

☐ I would like to make additional space available.

[Full disk summary and boot loader...](#)

1 disk selected; 32 GiB capacity; 32 GiB free [Refresh...](#)

Software Selection

Select Minimal Install. Do not select any additional packages, these will all be added later in a controlled manner by the installation of each required role in the jtel system.

SOFTWARE SELECTION

Done

CENTOS LINUX 8 INSTALLATION

de

Help!

Base Environment

☐ **Server with GUI**
An integrated, easy-to-manage server with a graphical interface.

☐ **Server**
An integrated, easy-to-manage server.

☒ **Minimal Install**
Basic functionality.

☐ **Workstation**
Workstation is a user-friendly desktop system for laptops and PCs.

☐ **Virtualization Host**
Minimal virtualization host.

☐ **Custom Operating System**
Basic building block for a custom CentOS system.

Additional software for Selected Environment

☐ **Guest Agents**
Agents used when running under a hypervisor.

☐ **Standard**
The standard installation of CentOS Linux.

☐ **Container Management**
Tools for managing Linux containers

☐ **.NET Core Development**
Tools to develop .NET applications

☐ **RPM Development Tools**
Tools used for building RPMs, such as rpmbuild.

☐ **Development Tools**
A basic development environment.

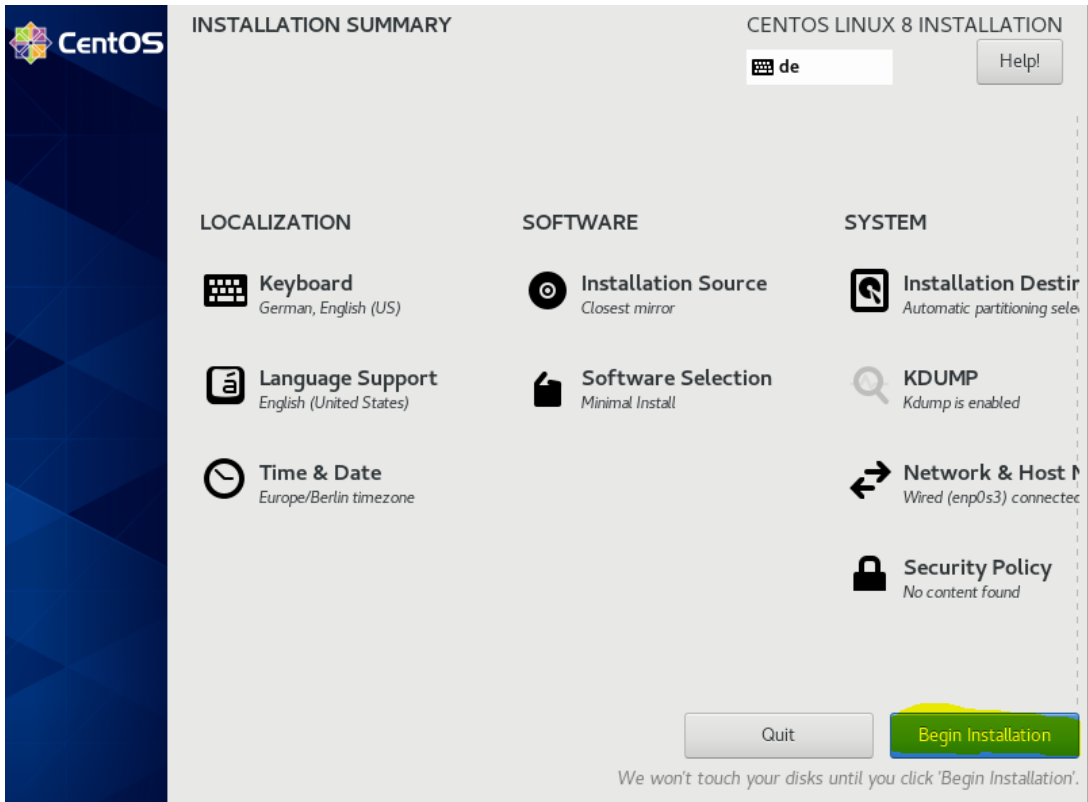
☐ **Graphical Administration Tools**
Graphical system administration tools for managing many aspects of a system.

☐ **Headless Management**
Tools for managing the system without an attached graphical console.

☐ **Legacy UNIX Compatibility**
Compatibility programs for migration from or working with legacy UNIX environments.

☐ **Network Servers**

Begin Installation



During the Installation, set a password for root



CONFIGURATION

CENTOS LINUX 8 INSTALLATION

de

Help!

USER SETTINGS

 **Root Password**
Root password is not set

 **User Creation**
No user will be created

 Installing krb5-libs.x86_64 (183/387)

 Please complete items marked with this icon before continuing to the next step.

ROOT PASSWORD

CENTOS LINUX 8 INSTALLATION

Done

de


Help!

The root account is used for administering the system. Enter a password for the root user.

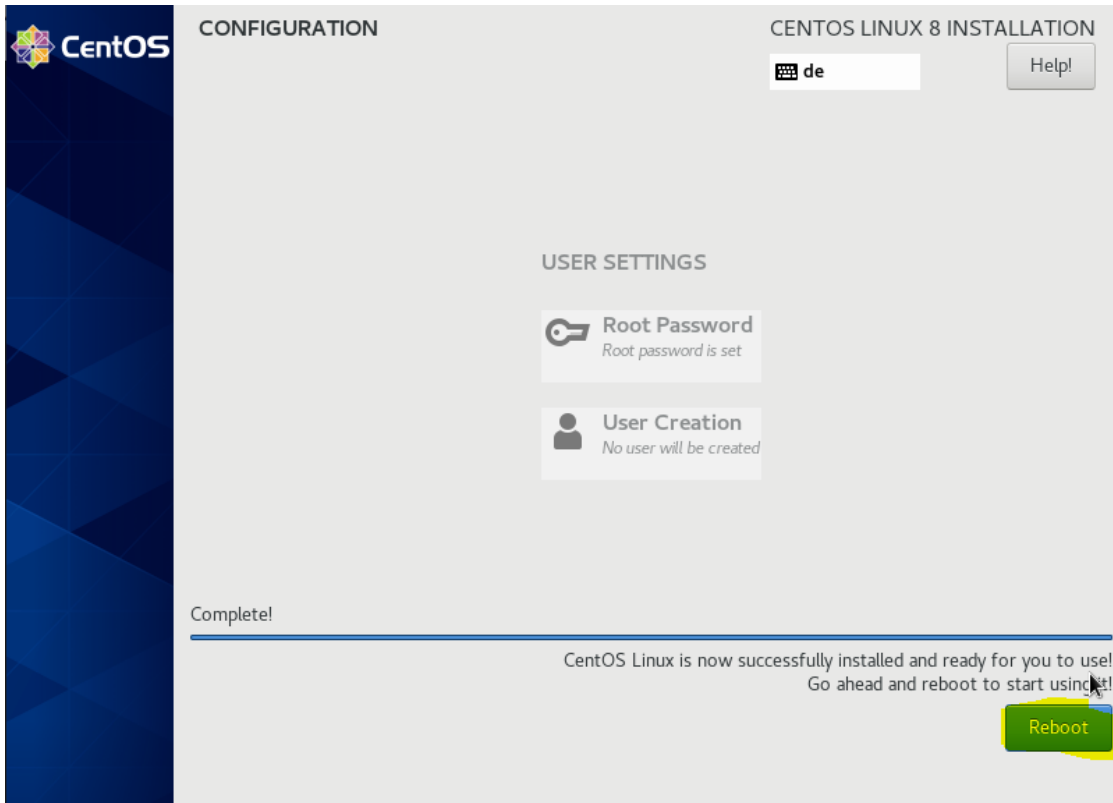
Root Password:

Weak

Confirm:

 The password fails the dictionary check - it is based on a dictionary word You will have to press **Done** twice to confirm it.

Reboot and check if everything is OK



After basic installation, you should be able to ssh into the machine using root and the password you set.

If the customer is installing the OS, this is the point at which the machines should be handed over to the project manager.

Do not install any further packages. You may do this once the jtel installation is completed - AT YOUR OWN RISK.